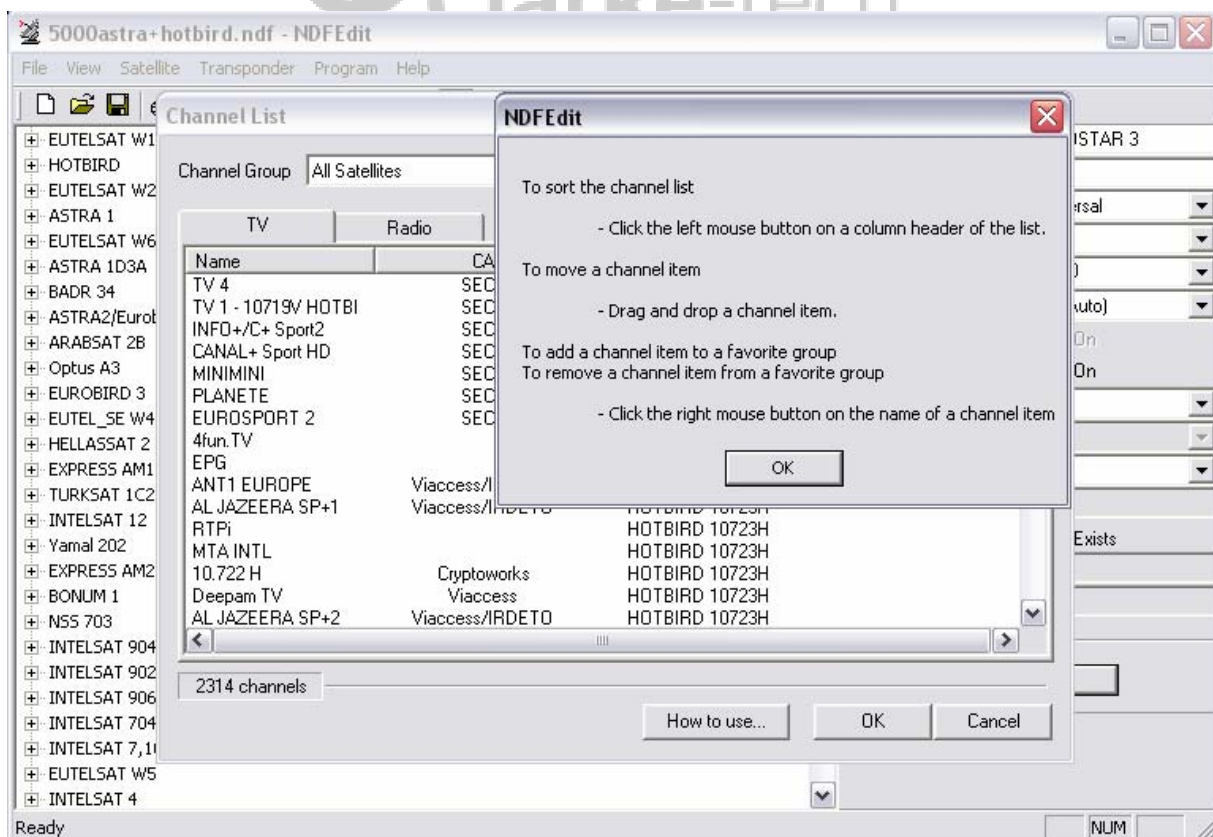




NDFEdit Channel Edit Program

This channel edit program supported *.ndf and *.cndf (compressed) setting files. The channel edit program although some what different than CtechEditorStudio and Setedit and it is not difficult to use and set up channel lists. As noted previously, when you open the tool you will see some differences as compared to CtechEditorStudio. After opening the channel list in the tool, you will see a list of satellites in the list. By clicking on the **satellite** you wish to view, you will see settings for the satellite in the right window. The tool offers 3 type options of LNB, single, universal and ocs. Enter **9750** for universal type LNB's in **LNB Freq** and **10600** for universal type LNB's in **LNB Freq H**.



Adding a Satellite

The basic satellite list in the Clarke-tech receiver and the default settings files contains a list with the most important satellites. To add a new satellite to the list, click on “-----” and enter a satellite name and then enter the settings for the satellite in the satellite settings window to the right.

Deleting a Satellite

Most likely, you may not want to delete the satellite entirely from the list, but will delete all data listed under the transponders on the satellite. This in effects closes the satellite for all practical purposes, but leaves you with the option of adding it back with relative ease. To delete a satellite in this manner, click on the **satellite name** in the list while the edit tool is opened to the list you are working with. Click on “**Transponder**” in the toolbar and then click on “**Delete All in Network**” in the drop down window. A satellite that contains no channel data will appear in the list without the “+” sign in front of the satellite when viewing the list. For those who want to delete the satellite from the list entirely follow the steps set out previously and continue over to the right to the satellite setting panel and click inside the box with **satellite name** and delete the name. **Be sure to enter “- - - -”** in the box, other wise “**No Name**” will be displayed in your list.

What is a PID?

PID stands for Packet ID, each transponder has several TV channels on it, they all have a unique ID. When you select a channel to view, that ID is used to “pick” digital packets from that transponder’s stream. A TV channel will have a Video PID and an Audio PID (and sometimes a Dolby5.1 PID), music channels will just have Audio PIDs. If you just scan the transponder it will ID all the channels and their PIDs. If you want to do it manually go to **www.lyngsat.com**, select your satellite, then find the transponder you want and start to enter the PIDs for each channel.

Adding Transponders

Before going any further into adding transponders and the channels, you need to get your information for the data to enter for transponder frequencies, polarities and the channel data information. This can be done by using a previous channel list with the information you need or by going to the Lyngsat Site on the net > **www.lyngsat.com**. To add transponders, click on **satellite**, and then click on “+T” or you may click on “**Transponder**” in the toolbar and then click on “**Add New**” in the drop down window. Either way opens a transponder setting window to the right where you will enter transponder number, frequency, symbol rate and polarity. The polarity setting will give you the option of using Left and Right for DSS circular type LNB’s or Vertical and Horizontal for FSS linear type LNB’s. Keep in mind, all odd transponders are right or vertical and even number transponders are left or horizontal in polarity.

Note: The setting data from Lyngsat are not always up to date !!

Deleting Transponders

Click on **Satellite**, click on the transponder you want to delete and click on “**-T**” or you may click on “**Transponder**” in the toolbar and then click on “**Delete Selected**” in the drop down. You can delete more than one transponder by using the later option.

Adding Channels

To add channels, locate the info as to what satellite and transponder the channel appears on from the lyngsat information. Click on **satellite**, click on **transponder** the channel is located on. Click on “**+P**” in the toolbar and this will open the channel setting window on the right. Enter the name of the channel (Hint: Enter Dish channel # in front of name to make it easy to line up in Dish matching order later.), Service ID number (SID), PMT PID, PCR and Video PID , Audio Pid and click on the “**scrambled channel**” box if signal is scrambled for the channel. You can also enter alternate Audio Pids if desired. Be sure to check your entries before hitting ok as the next time you view it, after saving, it will be in hex format.

Deleting Channels

To delete a channel, click on **satellite**, expand to show the transponder list, click on **transponder** to show channels, click on **channel** you wish to delete and click on “**-P**” to delete channel or you may go to “**Programs**” in the toolbar and use the appropriate command in the dropdown window. The later option allows deletion of more than one channel.

Copying and pasting channel data from one list to another

The NDFEditing tool will support copying and pasting from one list to another. Info from one list can be transferred to another as long as they are from the same transponder. To add a channel in this manner, locate the transponder you want to add the channel to, select Program in the toolbar, select “New” in the dropdown window. This opens the channel setting window, paste your info in, one line at a time from the other list.

Uploading your channel list

Connect receiver to PC. Open the Ctechup Tool and click on **channels** and then **upload**. It will show you a file name, be sure to change (by default the original name will appear) the name to what you will call your list you are uploading. Begin your upload and it will save for you. At all **Clarke-tech** receiver with USB port, the file can be copied also onto a USB memory device (USB pen, USB HDD) > Mainmenu USB - Data Transfer > NDF UPLOAD Button.



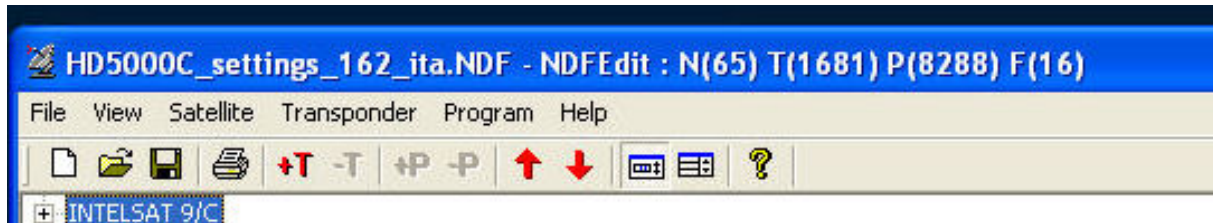
Download >Transfer the data from the PC to the receiver

Upload >Transfer the data from the receiver to PC

The satellite receiver keeps two frequency/channel-list database; One is the default database and the other is the normal database. Whenever install the channels by scanning the satellite, only the normal database will be modified. When you reset the channel list by factory-resetting, the normal database will be replaced with the default database.

- 1) If you download your *.ndf to the normal database, then the channel list will be same as your ndf, immediately. But if you reset the channel list by factory-resetting, your new channel list will be erased and replace with the default one.
- 2) If you download your *.ndf to the default database, the current channel list will not be changed at all. But whenever you reset the channel list by factory-resetting, the channel list will be replaced with your new *default*.ndf list.

Information about settings in the header [**signs and symbols**]



HD5000C_settings_162_ita.NDF - NDFEdit: N(65) T(1881) P(8288) F(16)

HD5000C_settings_162_ita.NDF is the file name

NDFEdit:

- N satellites
- T transponder
- P programmes (channels)
- F favourite lists

The number in brackets () is the quantity